

# DECISIONS LIE AHEAD, LET US GUIDE YOU DOWN THE RIGHT PATH

www.qualitypath.com



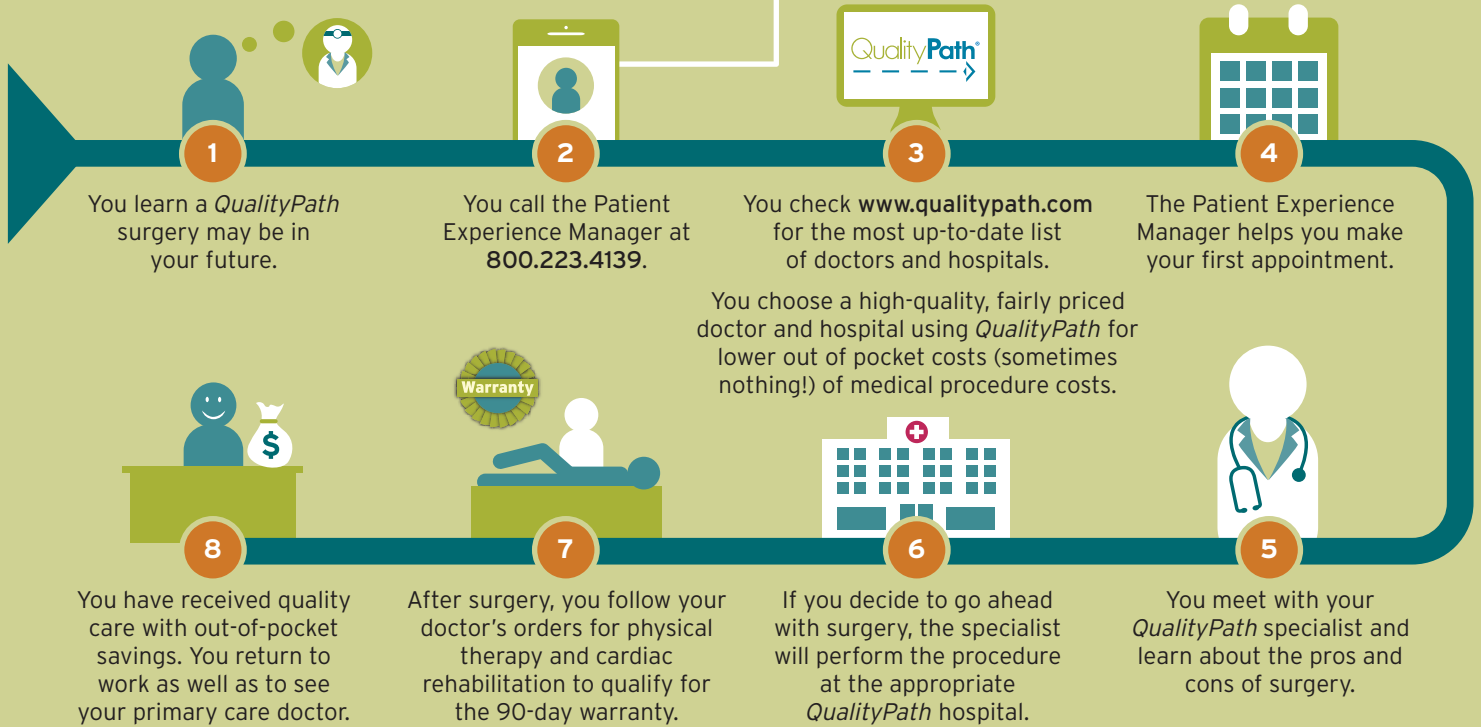
## Patient Experience Manager

- ▶ Explains *QualityPath*
- ▶ Assists with scheduling
- ▶ Helps transfer records

800.223.4139

## QualityPath® for Surgeries

(Knee replacement, Total hip replacement or Coronary Artery Bypass Graft)



## QualityPath® for Tests

(CT or MRI)  
As of 1/1/17

